

Developed By:



Builders & Developers:

Dhimant Shah
98242 14451

Divyesh Shah
98242 14452

Nishith Shah
97148 15158

E-mail : homemaker_1982@yahoo.com
Web : www.home-maker.in

Architect :



Structure :
Dip Structural Consultant

Site :
"Aprirose"
Opp. Samved Hospital, Nr. Blossom Appt.,
Swastik Society, Off. C. G. Road,
Navrangpura, Ahmedabad -9.



aprirose 
4 BHK Lifestyle Apartment

A HOME WHERE LUXURY BLOSSOMS...

જામનગર



making
difference
since
30
years

Fulfilled
9000
Dreams

Accomplished
57
projects

"Home-Maker" group has enjoyed two decades of proud existence & glory. Creating quality "Homes with Hearts" has always been the driving force, motivation & inspiration throughout our journey in Jamnagar.

Call it a vision or farsightedness, but "Home Maker" has always sensed the potential of development, it has made "Jamnagar" "Constructed heaven" with string of beautiful projects.

The group is credited to have developed some of the most prestigious & lifestyle enhancing Residential & commercial projects. Our Projects fit all economical strata & we have always laid emphasis on providing quality nature-centric development.

Now we are Coming up with a Luxurious apartment scheme in fastest developing city & commercial Hub of Gujarat- Ahmedabad.

Choose any of "Home-Maker" project & capitalize on your investment....because with "Home-Maker" you are sure to get the best location, convenience, amenities and lifestyle in "Jamnagar and Now in Ahmedabad".

About us



A Loving
Atmosphere
In Your Home
Is The
Foundation
Of Your Life

Salient Features

Located in The Heart of the City-

Navrangpura, Off C.G.Road

Parking (2 Cars Each)

Fully automatic Lift

All Rooms Will have Split AC's

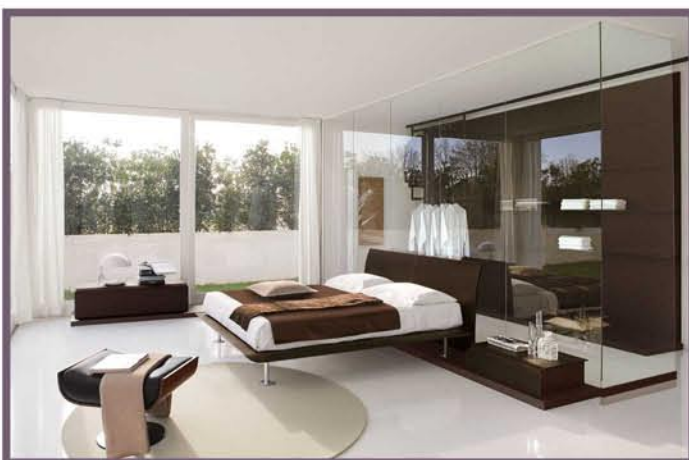
Modular Kitchen

Premium Quality Sanitary ware

Superior quality Hardware fittings

Security With CCTV Camera & Intercom

Italian Marble Flooring in Drawing & Dinning







Parking Plan



Typical Floor Plan

No more dreams! This time, it's for real.

STRUCTURE

Safe & sound quality controlled R.C.C. frame structure with best material component. Earthquakes resistant design.

PLASTER WORK

Double coat sand faced plaster on external walls. Single coat mala plaster in inner area.

FLOORING & WALL TILING

Italian Marble Flooring In Drawing And Dining Area
1mts. x 1mts. Vitrified Polish Tiles Flooring in other Area.
Granite Platform in Kitchen with S.S. Sink.
Stone shelf in store room.
Kota stone flooring in wash area.
Ceramic tiles dado up-to slab lvl above kitchen platform.

DOOR & WINDOW

Decorative main door with wooden frame & safety locks.
Internal doors with wooden/ granite frame & flush shutter with safety locks.
Superior quality hardware fittings.
Water resistant & easy to clean Anodized Aluminum sliding window for Modern look with Marble/ Granite ravils.

ELECTRICAL WORK

3-phases concealed fire resistant right gauge multi stand ISI copper wire.
Distribution board with MCB & ELCB ensure maximum safety.
ISI make modular electrical accessories.
Sufficient electrical points in all areas.
Good quality of earthing.
Landline phone conduit.
D.T.H. T.V. wiring conduit.

WALL PAINT

Long lasting & weather resistant acrylic paint of standard make to all external walls.
All internal walls with water resistant smooth cement or acrylic base putty finish.

WATER PROOFING

Waterproofing in all toilets. China mosaic in all terrace.

PLUMBING & SANITATION

Good quality designer sanitary ware for spotless and sparkling toilets.
High quality plumbing fixtures.
Corrosion free & leak proof CPVC/UPVC pipe & fittings with brass ends.

TOILETS

Glazed / ceramic tiles up-to slab lvl.
EWC couple closet - wall hung - standard make
CP brass fittings - standard make



Regular Terms & Conditions:

- This Brochure Is For Information Only And Not Part Of Any Legal Document
- All Measurements Are Subject To Change As Required
- The Rights To Change Plan And Structure Reserves With Organizer
- No External Changes Will Be Allowed Or Entertained
- All Legal Charges, AEC Charges, Service Tax And AMC Charges Will Be Borne By Occupier Or Members
- Any Extra Charge In Between Due To Change In Government Policy Or Rates Will Be Informed And To Be Borne By Member
- Maintenance Deposit Shall Be Borne By Members
- Any Commercial Activity Leading To Any Kind Of Pollution Or Disturbance To Residents Will Not Be Allowed
- Terrace And Margin Rights Lies With Organizer
- Irregular Payment Will Lead To Cancellation Of Booking
- Any Change Directed By Architect/ Organizer Will Be Binding To All Members

Way to your home

